

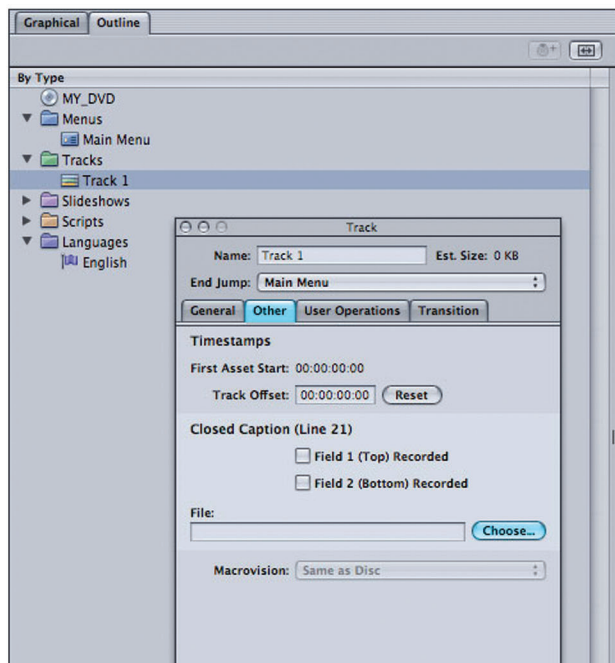


What you need:

- Finished DVD Studio Pro project
- Caption file (.scc)
Each track requires its own .scc file.

Step 1: Add .scc caption file to your track(s)

- Select your track in the Outline tab.
- In the Inspector, click the Other tab.
- Under Closed Caption (Line 21), click the Choose button.
- Navigate to your .scc file for that track, and click Ok.



NOTE: Importing .scc captions will automatically activate the **Field 1 (Top) Recorded** setting.

This is the correct setting.

Step 2: Burn disc and test

- When finished authoring, burn your disc.
- Test your disc on a DVD player connected to a television set with a closed captioning decoder.
- On the television set, turn ON closed captioning.

NOTE: Some DVD players and cords do not properly transmit closed-caption data to the television.

